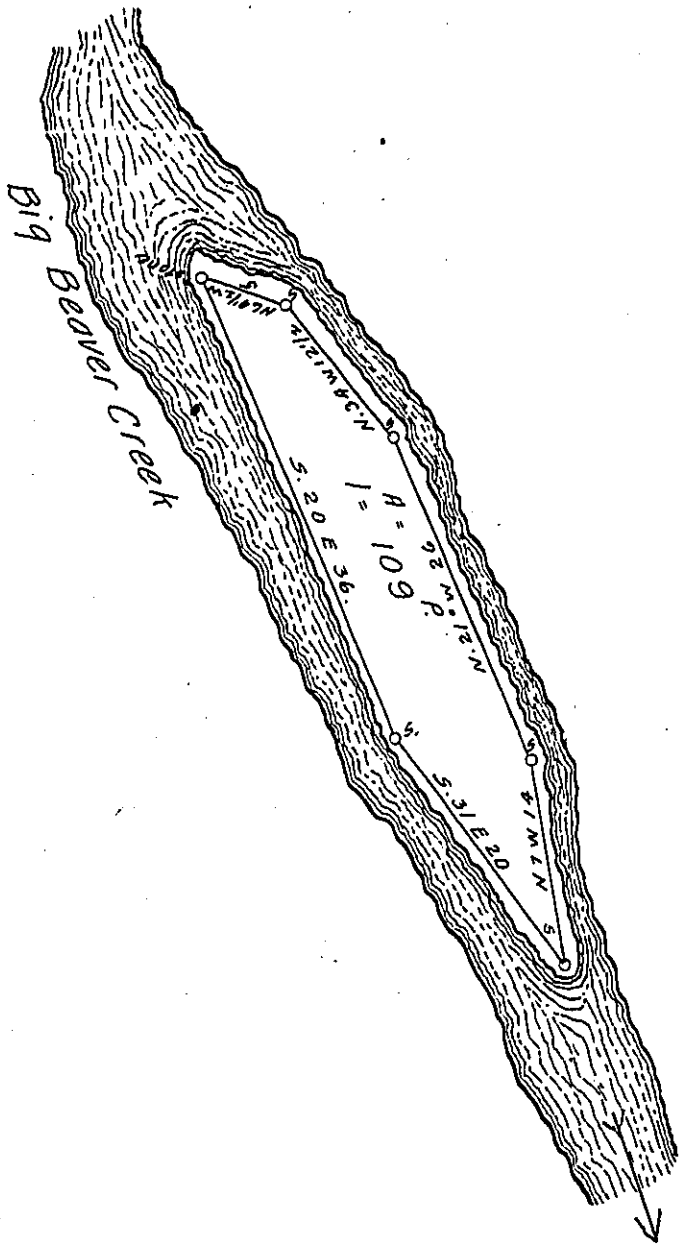




Courses & Distances

- S. 20 E 36
- S. 31 E 20
- N. 7 W 14
- N. 21 W 26
- N. 34 W 12 1/2
- N. 69 1/2 W 5



The Above Draught of an Island Surveyed November 22nd 1825 in pursuance of an order from the Board of property Dated November 8th 1825 and now returned in pursuance of Warrant in the name of Robert Moore Dated December 15th 1825 being an Island in Big Beaver Creek (a branch of the Ohio-) about half a Mile from the Mouth. New Sewickley Township Beaver County Containing 1 acre 109 perches.

To Gabriel Hiester Esq^r.
Surveyor General

R. W. Law D. S.

July 10th 1826

IN TESTIMONY that the above is a copy of the original remaining on file in the Department of Internal Affairs of Pennsylvania, made conformably to an Act of Assembly approved the 16th day of February 1833, I have hereunto set my hand and caused the Seal of said Department to be affixed at Harrisburg, this twenty sixth day of August 1907.

Henry Howell
Secretary of Internal Affairs.